



**SOK**<sup>®</sup> ...building service  
stavební

## STEEL STRUCTURE CATALOGUE



S.O.K. stavební, s.r.o.

Střítež, Hrotovická - Průmyslová zóna 162

674 01 Třebíč 1

Česká republika

tel.: +420 568 838 811

e-mail: sok@sok.cz

[www.sok.cz](http://www.sok.cz)

## FOCUS OF OUR ACTIVITIES

- steel structure production
- industrial buildings
- housing
- manufacture of precast
- reconstruction and renovation
- construction of prefabricated family houses
- construction of prefabricated residential houses
- complete farm buildings
- Related services: building design  
project management

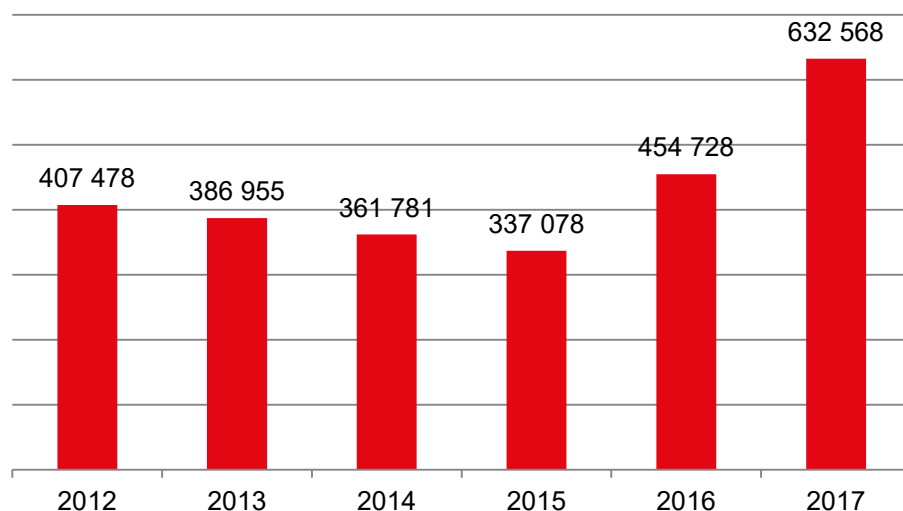
## GUARANTEE

- compliance with deadlines and the agreed prices
- recommendation of the most efficient materials and structures
- implementation of experience from similar buildings

## WE OPERATE IN THE CZECH AND SLOVAK REPUBLIC

- overview of our buildings can be found at [www.sok.cz](http://www.sok.cz)

## CASH FLOW (thousand Kč)



## RANGE OF SERVICES

- design of steel structures (SCIA Nexis 32)
- designing and processing of technical drawings in 3D programs (Advance-Steel, TEKLA)
- consultancy for investors, opposition
- manufacture, supply and assembly of steel structures incl. sheathing

## QUALITY GUARANTEE

- we guarantee quality based on the established czech quality system CSN EN ISO 9001:2001 of modern technology
- professionalism and skills of our employees
- we possess all necessary licenses and certificates for supply of steel structures
- we follow prescribed technological procedures
- we implement a system of continuous controls
- we provide high production discipline

## WARRANTY

- warranty on primary and secondary structures
- guarantees for surface treatment of structures and elements of the sheathing according to warranty cards

## SERVICES

- material cutting on sawing-drilling machine Kaltenbach
- drilling holes on sawing-drilling machine Kaltenbach
- shaped sheet metal cutting, including making holes on burning machine ESAB with plasma or gas technology
- welding flanges of beams and stand on ESAB welding machine
- surface finish of parts before painting in a continuous blasting
- high-performance paint spray in a coating and drying tunnel
- performance of locksmith and welding works according to request

## S.O.K. BUSINESS TEAM

---

• MAREK BRABENEC  
business director

Tel.: (+420) 568 838 828  
e-mail: [brabenec@sok.cz](mailto:brabenec@sok.cz)

---

• JIŘÍ PASEKA  
sales manager

Tel.: (+420) 702 200 046  
e-mail: [paseka@sok.cz](mailto:paseka@sok.cz)

---



## PRODUCTION HALL



The company S.O.K. stavební has a production area of 7,344 square meters including hall of four sections equipped with modern production facilities.

In the operating halls it is possible to manipulate with the individual profiles about the weight of 13 t, the length of 30 m and a height of 5 m.

Metallurgical materials and finished products are being stored inside the halls. Hereby, we eliminate the impact of unfavorable weather conditions on the base material as well as the recently painted steel structures.

### STORAGE HALL



### PRODUCTION HALL I



### PRODUCTION HALL II



### EXPEDITION HALL





## SAWING-DRILLING MACHINE KDM 712 - KBS 750 DG

Working range drills - profile min (mm) / max (mm):

L 50 x 50 x 5	H 80 x 46
TR4 250 x 250 x 48	TR4 705 x 35
U 50 x 24	hole diameters: 10 - 32 mm
U 400 x 110 x 14	

Cutting range - angle / Dimensions (mm)

rectangular 90° / 750 x 500  
rectangular 60° / 520 x 500

The length of the input material 1,5 - 12,1 m

Larger dimensions by agreement



## CUTTING MACHINE ESAB COMBIREX CXD-P 3000

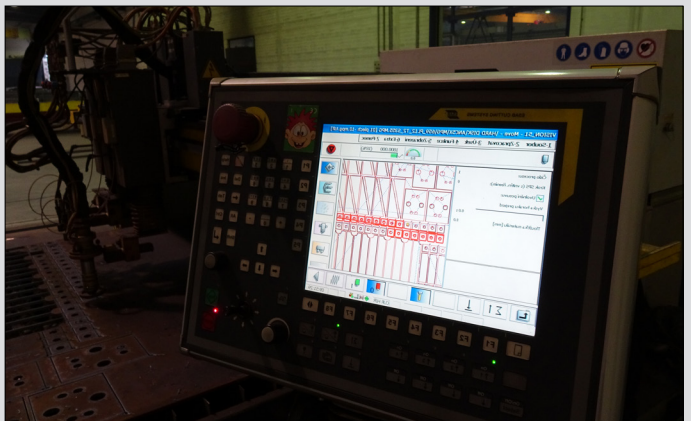
Burning shapes including holes with plasma or flame.

The maximum board size : 2000mm x 6000mm

Plasma : to sheet thickness 15 mm including

Flame : to sheet thickness 60 mm

Holes : aperture diameter = 2 x sheet thickness





## WELDING MACHINES ESAB MECHTRAC 2500

Welding Technology:

Method 121 (submerged arc welding),  
fillet weld size without limitation as attested by  
test WPQR.

The standard height above the table is 1250 mm

Height without the use of the table is 1900 mm

Weldments dimensions need to be consulted.



## CONTINUOUS BLASTING EQUIPMENT

The device is suitable for blasting profiles and  
finished parts (weldments)

Dimensions of blasted materials are limited by  
dimensions of the inlet ongoing blasting device

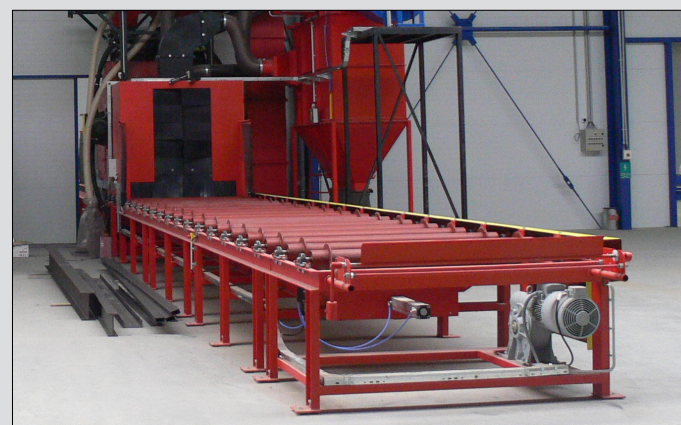
Maximum dimensions

h - 1400 / w - 700 mm

h - 650 / w - 1400 mm

Length of blasted parts is about 12 m by  
agreement

The surface for blasting corresponds to the degree  
Sa 2,5



## PAINTING TUNNEL - EQUIPMENT FOR FINAL SURFACE FINISHES

Spray booth consists of a spray and dryer box

Spray coating materials are carried out by high-pressure equipment

Dimensions of entry gate  
W - 4000 mm / in - 3500 mm  
greater lengths by agreement





## TEDOM s.r.o., company's production premises

Place of realization: Třebíč

Dimensions: 7 600 m<sup>2</sup>

Weight: 204 tun

Realization date: 2006



## S.O.K. stavební, s.r.o., company's production premises

Place of realization: Třebíč

Dimensions: 72 x 102 m | 32 x 13 m

Weight: 245 tun

Realization date: 2006 / 2007



## TC develop, a.s., distribution center

Place of realization: Jirny

Weight: 88 tun

Realization date: 2008



## SWN Moravia, administrative building

Place of realization: Mladoňovice

Dimensions: 66 tun

Realization date: 2008





## Storage hall Atlanta

Place of realization: Dyje

Dimensions: 35 x 97 m

Weight: 110 tun

Realization date: 2008



## Shopping center Kaufland

Place of realization: Praha - Vypich

Dimensions: 46 x 60 m

Weight: 115 tun

Realization date: 2009



## Sports and wellness center

Place of realization: Rychnov n. Kněžnou

Dimensions: 36 x 36 m

Weight: 48 tun

Realization date: 2009



## GRAFOBAL ARTYPA s.r.o., production and storage hall

Place of realization: Holubov

Dimensions: 103 x 13 m

Realization date: 2008, 2009 / 2010



## ENVINET, a.s., production hall

Place of realization: Třebíč

Dimensions: 14 x 60 m

Realization date: 2010



## CENTROPEN, a.s., production hall

Place of realization: Dačice

Dimensions: 36 x 19 m

Weight: 27 tun

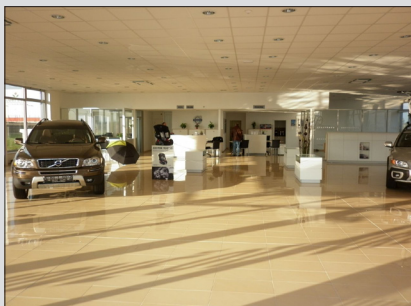
Realization date: 2010



## Auto Kurtz s.r.o., construction of Volvo garage and showroom

Place of realization: Vestec u Prahy

Realization date: 2011



## GREMIS, s.r.o., roofing of vulcanizing pipe

Place of realization: Velké Meziříčí

Weight: 50 tun

Realization date: 2011





## GRAFOBAL a.s., hall for preparing sheets

Place of realization: Skalica

Dimensions: 37 x 17 m

Weight: 18,5 tun

Realization date: 2011



## Novogal a.s., hall for hens

Place of realization: Dvory n. Žitavou

Dimensions: 25 x 104 m

Weight: 70 tun

Realization date: 2011



## Bilfinger Berger Baugesellschaft m.b.H, Plzeň, storage hall

Place of realization: Kladno

Dimensions: 34 x 35 m

Weight: 284 tun

Realization date: 2012



## AC-ROZKOŠ s.r.o., Jihlava, Hyundai showroom

Place of realization: Jihlava

Dimensions: 25 x 37 m

Weight: 107 tun

Realization date: 2012



## GEMO OLOMOUC, spol. s.r.o., Bauhaus

Place of realization: Plzeň

Weight: 86 tun

Realization date: 2012 / 2013



## Metrostav a.s., outdoor sports complex for TJ Slavia

Place of realization: Hradec Králové

Dimensions: 50 x 8 m

Weight: 25,5 tun

Realization date: 2012 / 2013



## TOP ALULIT s.r.o., reconstruction and extension of the production facility

Place of realization: Benešov

Dimensions: 79 x 22 m

Realization date: 2013



## Works L&W group s.r.o., new resort Weber 2nd stage

Place of realization: Prostějov

Dimensions: 21 x 21 m

Weight: 170 tun

Realization date: 2013





## PUMAX, spol.s.r.o., newly built factory and warehouse PUMAX

Place of realization: Třebíč

Dimensions: 29 x 17 m

Realization date: 2013



## HORNBACH BAUMARKT CS spol. s.r.o., shopping centre

Place of realization: Čestlice

Dimensions: 46 x 68 m

Weight: 211 tun

Realization date: 2013



## GRAFOBAL BOHEMIA s.r.o., annex of warehouse and dispatch hall

Place of realization: Holubov

Dimensions: 37 x 58 m

Weight: 68 tun

Realization date: 2013



## FORLIT, s.r.o., reconstruction and extension of the production hall

Place of realization: Rohatec

Dimensions: 20 x 50 m

Weight: 15,4 tun

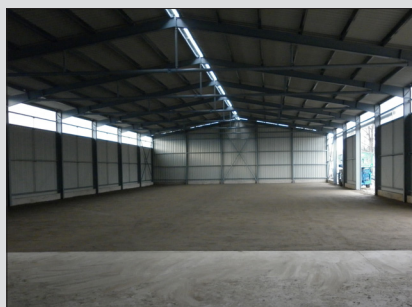
Realization date: 2013





## SENECO, spol. s.r.o., storage hall

Place of realization:	Hrbov
Dimensions:	50 x 20 m
Weight:	25,5 tun
Realization date:	2013



## COLAS CZ, a.s., roofing of stone landfills

Place of realization:	Bystřice n. Pernštejnem
Dimensions:	20 x 25,5 m
Weight:	22 tun
Realization date:	2014



## LIHEŇ STUDENEC, s.r.o., steel structure for the rearing of poultry

Place of realization:	Stropešín
Dimensions:	118 x 9 m
Weight:	19 tun
Realization date:	2014



## Pangea Tea s.r.o., steel structure

Place of realization:	Hlubočinka
Dimensions:	135 x 73 m
Weight:	156 tun
Realization date:	2014



## Zemědělské družstvo „Roštýn“, roofed dunghill

Place of realization:	Hodice
Dimensions:	42 x 29 m
Weight:	25,5 tun
Realization date:	2014



## Hvozdecká zemědělská a.s., steel structure of the barn for calves

Place of realization:	Hvozd
Dimensions:	30 x 18 m   24 x 13 m
Weight:	16,3 tun
Realization date:	2014 / 2015



## S.O.K. stavební, s.r.o., production facility

Place of realization:	Třebíč
Dimensions:	142 x 50 m   30 x 17 m
Weight:	392 tun
Realization date:	2015



## TC develop, a.s., administrative headquarters, warehouse and workshop

Place of realization:	Jirny
Dimensions:	51 x 34 m   17 x 16 m
Weight:	54 tun
Realization date:	2015





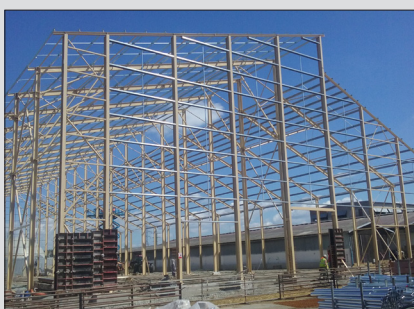
## SKLÁŘSKÉ STROJE ZNOJMO, s.r.o., newly built production hall

Place of realization:	Znojmo
Dimensions:	48 x 16 m
Weight:	61 tun
Realization date:	2015



## Zemědělské družstvo Dobruška, modernization of production stable

Place of realization:	Dobruška
Dimensions:	85 x 53 m
Weight:	143 t
Realization date:	2015



## Zemědělské družstvo Kožichovice, družstvo

Place of realization:	Kožichovice
Dimensions:	17 x 12 m
Realization date:	2015



## HT Steel, a.s., roofing of the football stadium

Place of realization:	Brno
Dimensions:	29 x 82 m
Weight:	83 tun
Realization date:	2015 / 2016



## Zemědělské družstvo „Roštýn“, technology storage shelter

Place of realization: Hodice

Dimensions: 12 x 30 m

Weight: 16,4 tun

Realization date: 2016



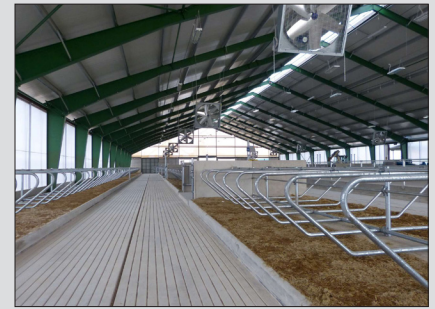
## BONAGRO, a.s., modernization of the dairy farm

Place of realization: Šlapanice

Dimensions: 36 x 78,5 m

Weight: 74 tun

Realization date: 2016/2017

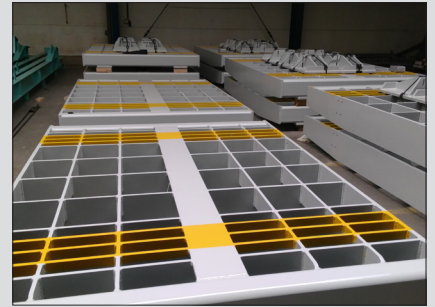
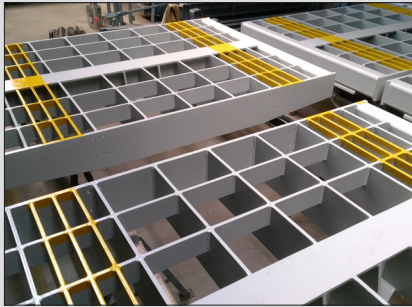


## KOOL Trading, spol. s.r.o., steel structure

Place of realization: Třebíč

Weight: 50 tun

Realization date: 2017



## DVP, družstvo, roofing of the silage trough

Place of realization: Pyšel

Weight: 37,14 t

Realization date: 2017

